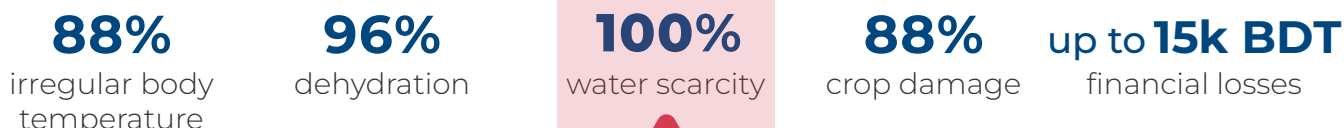




POST-IMPACT ASSESSMENT ON THE IMPACTS OF EARLY ACTION FOR DROUGHT AND HEATWAVE

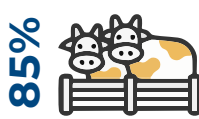
ADVERSE SOCIETAL IMPACTS



MOST IMPACTED SECTORS



AGRICULTURE



LIVESTOCK

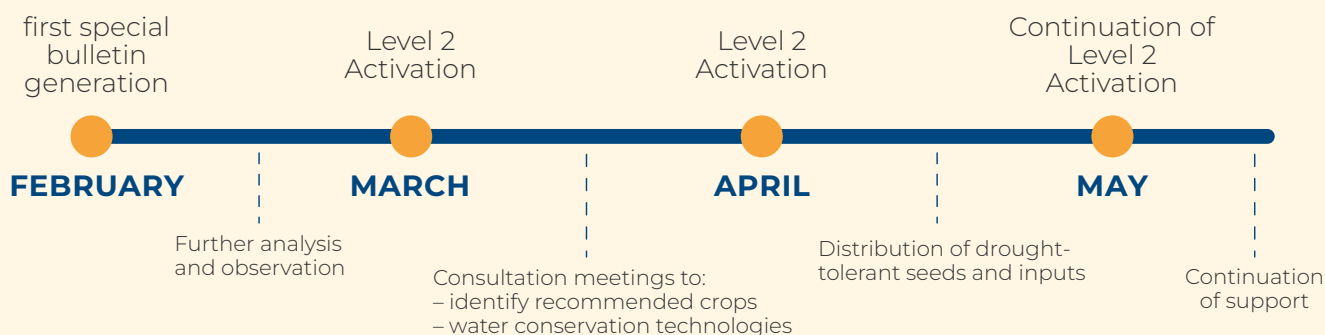


HEALTH

ADAPTIVE STEPS TAKEN TO MINIMIZE LOSS BASED ON THE EARLY WARNING AND ADVISORIES



TIMELINE OF ANTICIPATORY ACTION INTERVENTIONS



Distribution of Drought-Tolerant Seeds & Inputs



Support to Animal Health System



Animal Health Awareness Campaigns



Irrigation System Improvement



Heatwave Awareness



Early Action Planning Meetings



Unconditional Cash Grants



WASH Support

MOST EFFECTIVE FORMS OF DELIVERING INFORMATION:

94%



Miking

45%



Voice Messaging

37%



Word-of-Mouth

25%



Television

COMMUNITY INSIGHTS

- Early warning information should be understandable, with details on timing, what actions to take, intensity and duration of the event
- Provide as much lead time as possible for the community to take early action (preferably 10-15 days)
- Government or NGO interventions are effective in reducing the impact of heatwaves and droughts

RECOMMENDATIONS AND LESSONS LEARNED



Increase trust and experience of locals in using early warning information



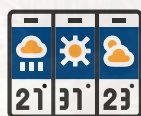
Enhancement of forecast interpretation capacity



Enhancement of the forecast products



Mainstreaming Seasonal to Sub-seasonal Forecast Application



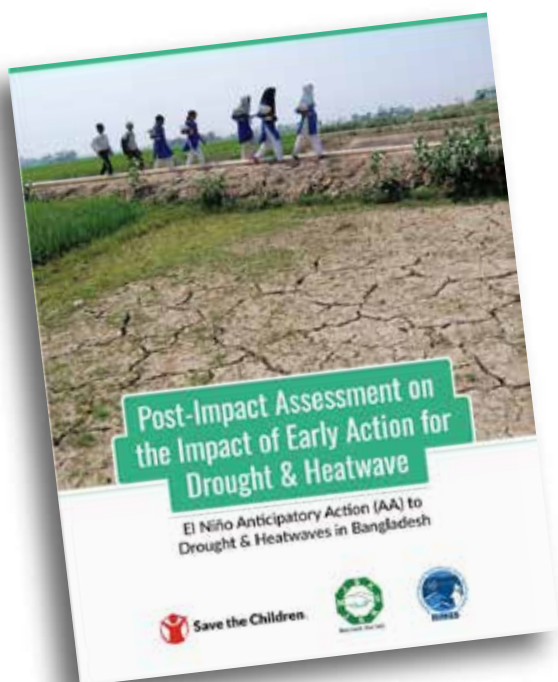
Adaption of multi-timescale and multi-hazard forecast



Capacity building of sectoral departments



Mainstreaming local and National level Early Action Protocol



**TO READ THE FULL REPORT,
SCAN THIS OR CODE:**



OR GO TO:

<https://rimes.int/Impact-of-EA-for-Drought-and-Heatwave>